



## Mission Assignment: Describe the structure of a flower



KS3-09-06

Referring to the presentation, complete this comprehension task about plant reproduction.

1. What part of a plant is its reproductive structure?

---

2. What types of plants bear fruits and flowers?

---

3. What are the two main types of reproduction in plants?

a. \_\_\_\_\_

b. \_\_\_\_\_

4. What are the female reproductive structures called?

---

5. What three parts does the pistil have?

a. \_\_\_\_\_

b. \_\_\_\_\_

c. \_\_\_\_\_

6. Why can't plants cross-fertilise?

---

---

7. What are the male reproductive structures called?

---

8. How is pollen carried to another plant?

---

---

9. What is self-fertilisation in plants?

---

10. What is the definition of a fruit in terms of a plant?

---



Mission Assignment: Describe the structure of a flower

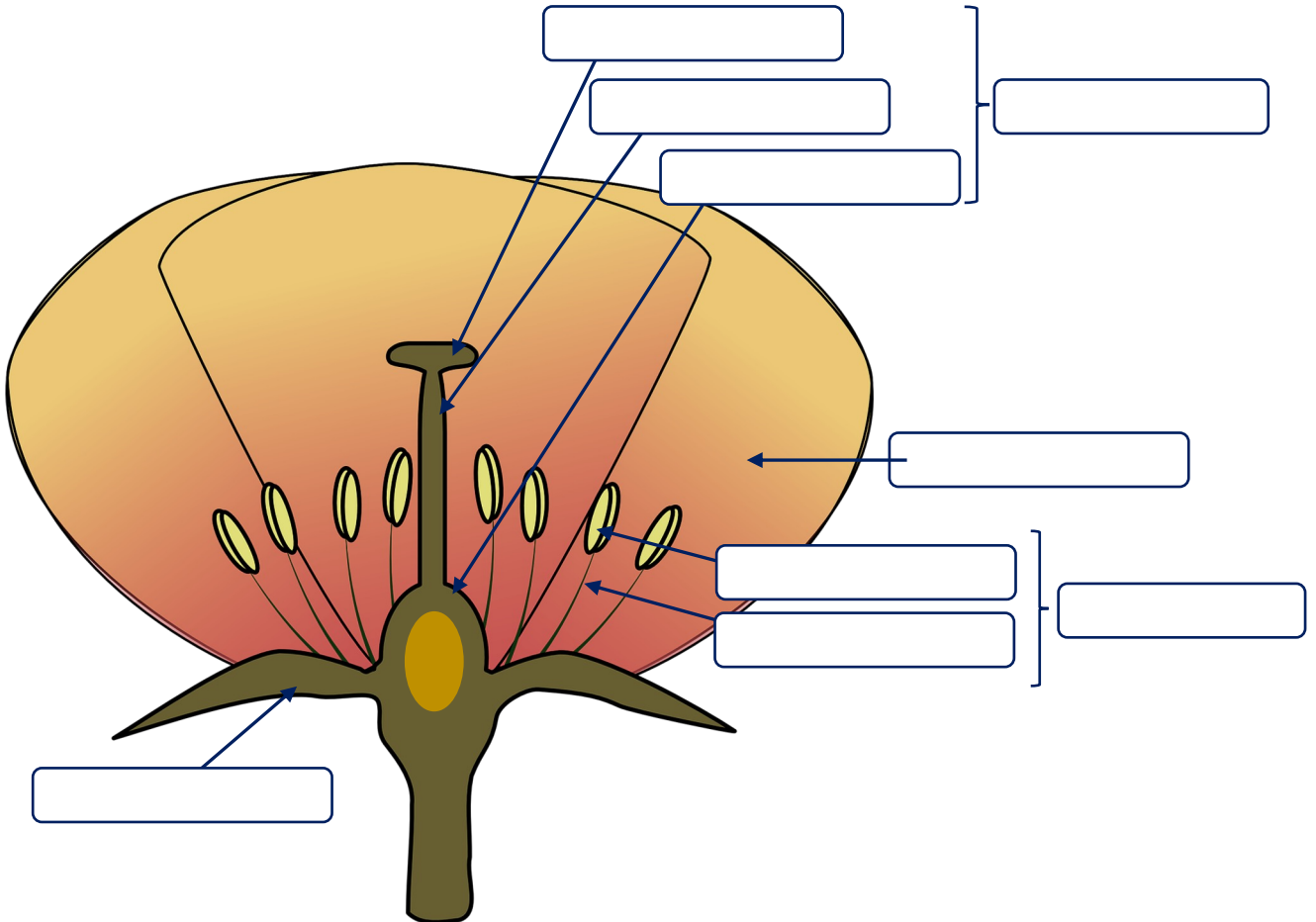


KS3-09-06

As you dissect the flower, lay each part within the boxes. Use clear tape to stick the parts down once you have finished.

<b>Petals:</b>	<b>Stem and leaves:</b>
<b>Pistil:</b>	<b>Stamen:</b>
<b>Sepals:</b>	<b>Other:</b>

Label and name the reproductive parts of a flower, using the word bank to help you.



## Word bank:

sepal

pistil

filament

ovary

style

petal

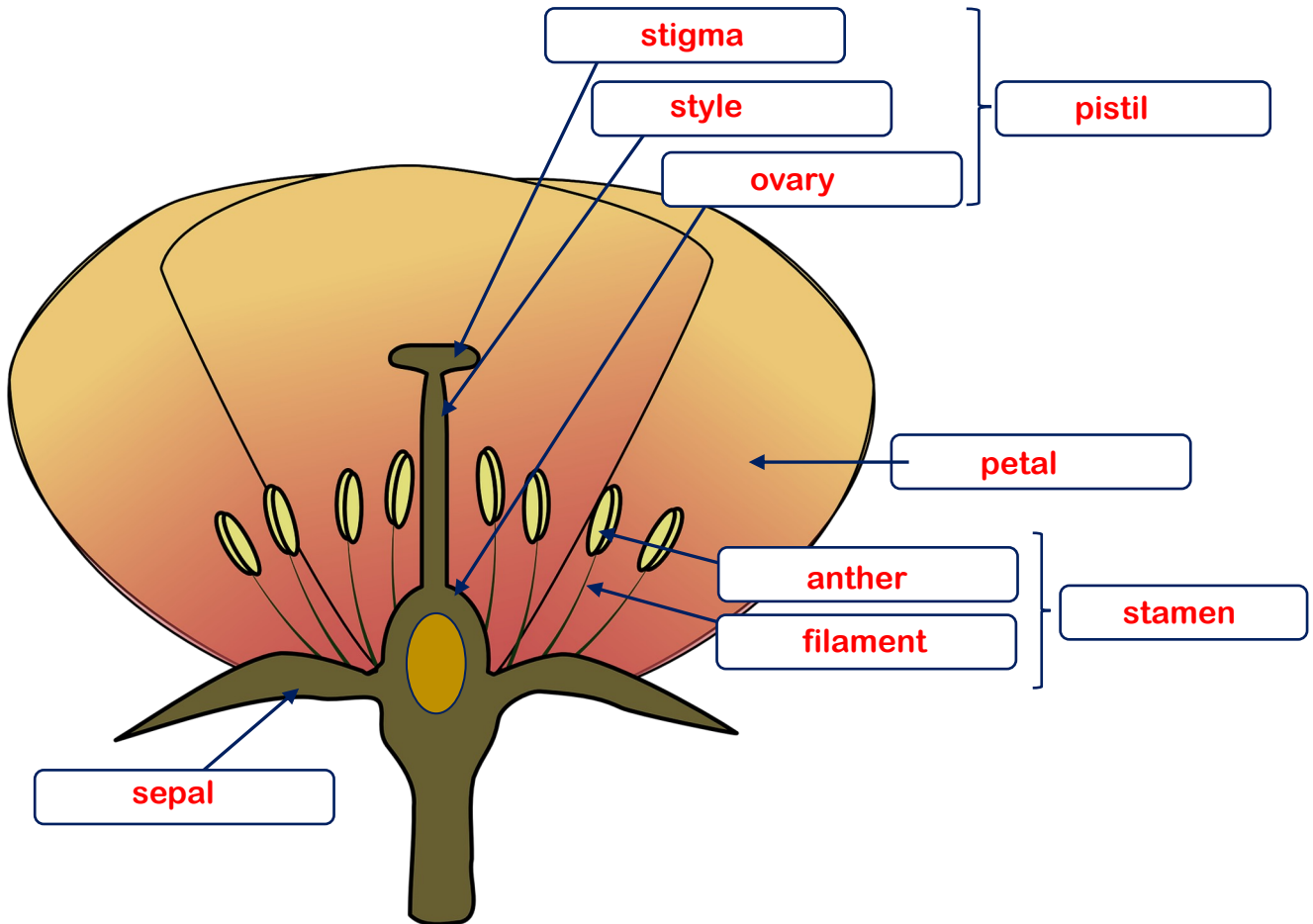
stamen

anther

stigma



Label and name the reproductive parts of a flower, using the word bank to help you.



Word bank:

sepal

pistil

filament

ovary

style

petal

stamen

anther

stigma



KS3-09-06

Referring to the presentation, complete this comprehension task about plant reproduction.

1. What part of a plant is its reproductive structure?

**Flowers**

2. What types of plants bear fruits and flowers?

**Flowering plants/angiosperms**

3. What are the two main types of reproduction in plants?

a. **Sexual**

b. **Asexual**

4. What are the female reproductive structures called?

**Pistil or capels**

5. What three parts does the pistil have?

a. **Ovary**

b. **Stigma**

c. **Style**

6. Why can't plants cross-fertilise?

**They cannot move to another plant to transfer pollen**

7. What are the male reproductive structures called?

**Stamen (anther and filament)**

8. How is pollen carried to another plant?

**Blown by the wind/carried by insects**

9. What is self-fertilisation in plants?

**When the plant fertilises itself as there might not be other plants nearby to transfer the pollen**

10. What is the definition of a fruit in terms of a plant?

**A mature ripened ovary**